

# Natural changes of population 1961 – 2022

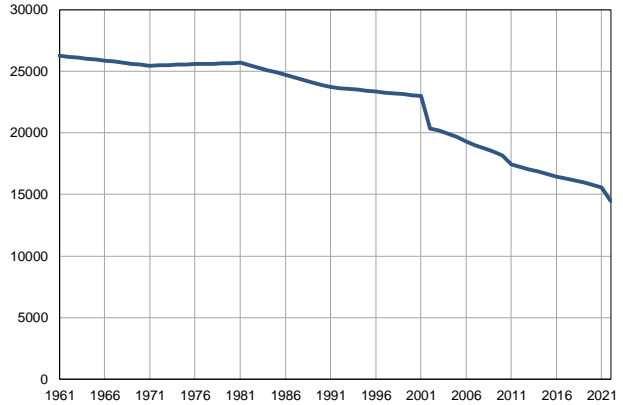
Profile  
July 2023

## Bela Crkva

	1961	2022
Population size	26276	14489
Livebirths, Number	449	136
Deaths, Number	307	300
Natural increase, Number	142	-164
Infants deaths, Number	35	0
Livebirths, per 1,000 population	17	9
Deaths, per 1,000 population	12	21
Natural increase, per 1,000 population	5	-11
Infants deaths, per 1,000 livebirths	78	0

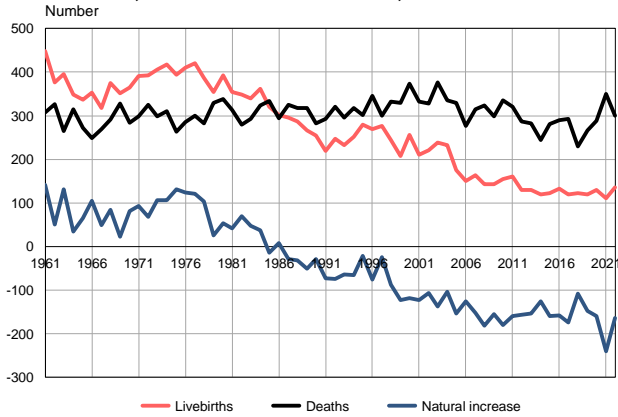
Source: Vital Statistics, SORS

Population size, 1961–2022



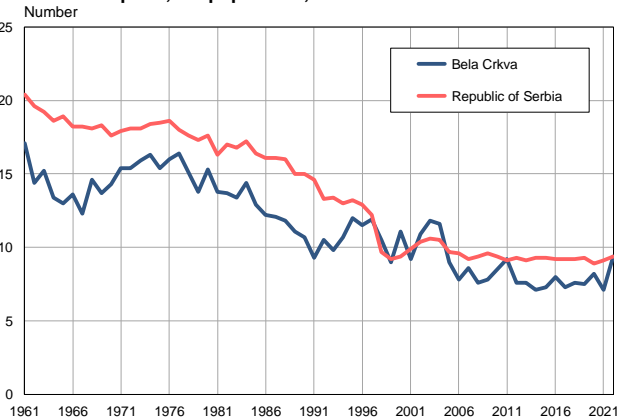
Source: Vital Statistics, SORS

Livebirths, deaths and natural increase, 1961–2022



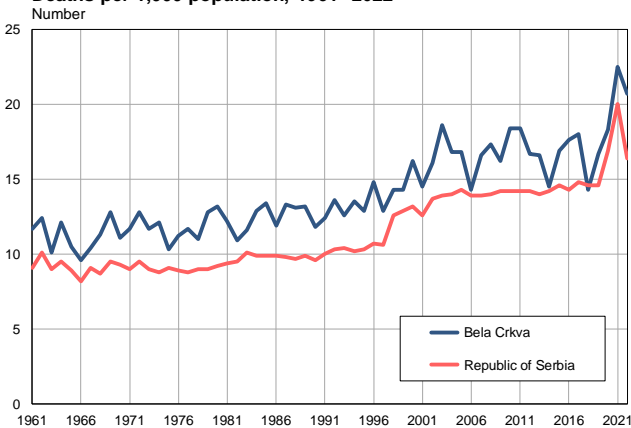
Source: Vital Statistics, SORS

Livebirths per 1,000 population, 1961–2022



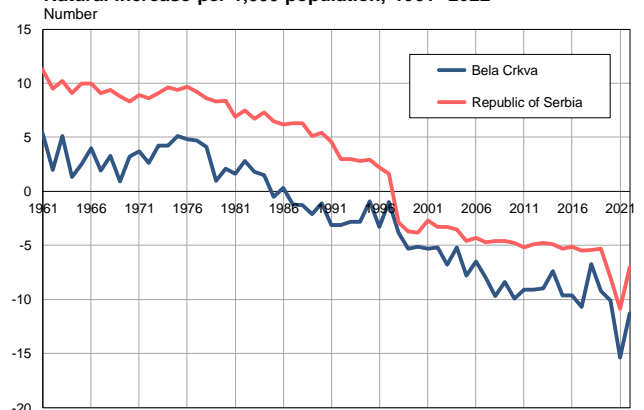
Source: Vital Statistics, SORS

Deaths per 1,000 population, 1961–2022



Source: Vital Statistics, SORS

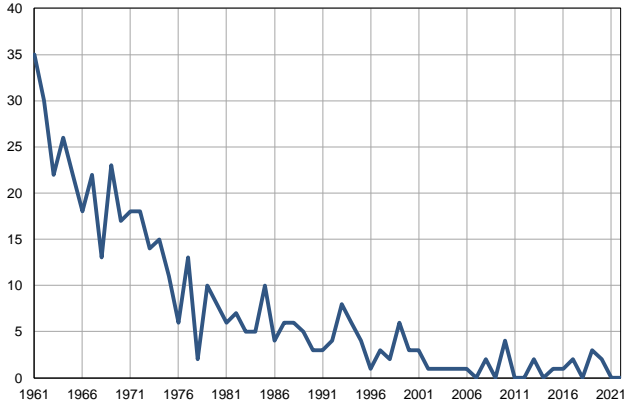
Natural increase per 1,000 population, 1961–2022



Source: Vital Statistics, SORS

**Infants deaths, 1961–2022**

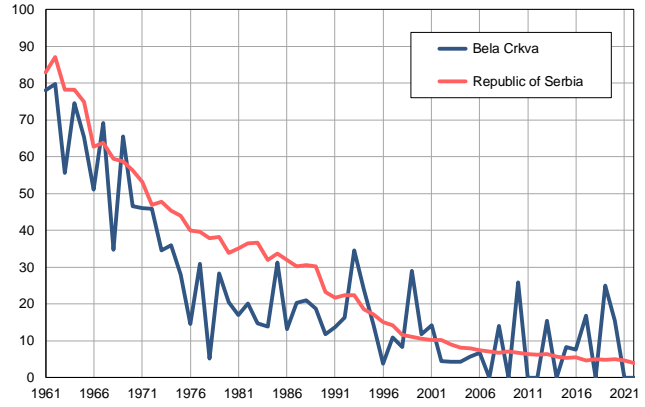
Number



Source: Vital Statistics, SORS

**Infants deaths per 1,000 livebirths, 1961–2022**

Number



Source: Vital Statistics, SORS

**Table. Natural changes of population, Bela Crkva**

Year	Number of population	Livebirths	Deaths	Natural increase	Infants deaths	per 1000 population			Infant deaths per 1000 livebirths
						Livebirths	Deaths	Natural increase	
1961	26276	449	307	142	35	17.1	11.7	5.4	78.0
1962	26193	376	326	50	30	14.4	12.4	2.0	79.8
1963	26111	396	265	131	22	15.2	10.1	5.1	55.6
1964	26028	349	315	34	26	13.4	12.1	1.3	74.5
1965	25946	337	272	65	22	13.0	10.5	2.5	65.3
1966	25863	353	248	105	18	13.6	9.6	4.0	51.0
1967	25780	318	269	49	22	12.3	10.4	1.9	69.2
1968	25698	375	291	84	13	14.6	11.3	3.3	34.7
1969	25615	351	328	23	23	13.7	12.8	0.9	65.5
1970	25533	365	284	81	17	14.3	11.1	3.2	46.6
1971	25450	391	298	93	18	15.4	11.7	3.7	46.0
1972	25474	393	325	68	18	15.4	12.8	2.6	45.8
1973	25498	406	299	107	14	15.9	11.7	4.2	34.5
1974	25522	417	310	107	15	16.3	12.1	4.2	36.0
1975	25546	394	263	131	11	15.4	10.3	5.1	27.9
1976	25570	410	286	124	6	16.0	11.2	4.8	14.6
1977	25594	421	300	121	13	16.4	11.7	4.7	30.9
1978	25618	387	283	104	2	15.1	11.0	4.1	5.2
1979	25642	354	329	25	10	13.8	12.8	1.0	28.2
1980	25666	392	338	54	8	15.3	13.2	2.1	20.4
1981	25690	355	313	42	6	13.8	12.2	1.6	16.9
1982	25493	349	279	70	7	13.7	10.9	2.8	20.1
1983	25293	340	293	47	5	13.4	11.6	1.8	14.7
1984	25095	361	323	38	5	14.4	12.9	1.5	13.9
1985	24898	320	334	-14	10	12.9	13.4	-0.5	31.3
1986	24699	302	294	8	4	12.2	11.9	0.3	13.2
1987	24500	296	325	-29	6	12.1	13.3	-1.2	20.3
1988	24302	287	318	-31	6	11.8	13.1	-1.3	20.9
1989	24104	267	318	-51	5	11.1	13.2	-2.1	18.7
1990	23905	255	283	-28	3	10.7	11.8	-1.1	11.8
1991	23707	220	293	-73	3	9.3	12.4	-3.1	13.6
1992	23635	247	321	-74	4	10.5	13.6	-3.1	16.2
1993	23562	232	296	-64	8	9.8	12.6	-2.8	34.5
1994	23491	251	317	-66	6	10.7	13.5	-2.8	23.9
1995	23418	280	301	-21	4	12.0	12.9	-0.9	14.3
1996	23346	269	345	-76	1	11.5	14.8	-3.3	3.7
1997	23272	276	300	-24	3	11.9	12.9	-1.0	10.9
1998	23200	244	332	-88	2	10.5	14.3	-3.8	8.2
1999	23128	207	330	-123	6	9.0	14.3	-5.3	29.0
2000	23057	256	374	-118	3	11.1	16.2	-5.1	11.7
2001	22984	211	333	-122	3	9.2	14.5	-5.3	14.2
2002	20363	221	328	-107	1	10.9	16.1	-5.2	4.5
2003	20181	238	376	-138	1	11.8	18.6	-6.8	4.2
2004	19949	232	336	-104	1	11.6	16.8	-5.2	4.3
2005	19664	176	330	-154	1	9.0	16.8	-7.8	5.7

**Table. Natural changes of population, Bela Crkva**

Year	Number of population	Livebirths	Deaths	Natural increase	Infants deaths	per 1000 population			Infant deaths per 1000 livebirths
						Livebirths	Deaths	Natural increase	
2006	19321	150	276	-126	1	7.8	14.3	-6.5	6.7
2007	19009	163	315	-152	0	8.6	16.6	-8.0	0.0
2008	18721	143	324	-181	2	7.6	17.3	-9.7	14.0
2009	18451	143	298	-155	0	7.8	16.2	-8.4	0.0
2010	18182	155	335	-180	4	8.5	18.4	-9.9	25.8
2011	17434	161	320	-159	0	9.2	18.4	-9.1	0.0
2012	17216	130	287	-157	0	7.6	16.7	-9.1	0.0
2013	17034	130	283	-153	2	7.6	16.6	-9.0	15.4
2014	16844	119	244	-125	0	7.1	14.5	-7.4	0.0
2015	16652	122	281	-159	1	7.3	16.9	-9.6	8.2
2016	16471	132	290	-158	1	8.0	17.6	-9.6	7.6
2017	16297	119	293	-174	2	7.3	18.0	-10.7	16.8
2018	16136	122	230	-108	0	7.6	14.3	-6.7	0.0
2019	15973	120	267	-147	3	7.5	16.7	-9.2	25.0
2020	15790	130	289	-159	2	8.2	18.3	-10.1	15.4
2021	15559	110	350	-240	0	7.1	22.5	-15.4	0.0
2022	14489	136	300	-164	0	9.4	20.7	-11.3	0.0

Source: Vital Statistics, SORS

## Definitions

### Population size

Number of population in the respective year. The data on the number of population in 1961, 1971, 1981 and 1991 are census data, while for the inter-census years the number of population was calculated as an average inter-census difference. From 2002 are given the population estimates that were calculated according to the census of population results and the annual statistics of natural mechanical population movements.

### Livebirths

Absolute number of live births in the course of a year. Live born child means a child giving vital signs after birth (breathing, i.e. heartbeat), even for the shortest time, regardless the mother's pregnancy duration.

### Deaths

Absolute number of deaths in the course of a year. Deceased is a person that whenever after having been born live, shows permanently stopped vital signs.

### Natural increase

Natural population increase is the number of live births minus the number of deaths.

### Infants deaths

Absolute number of infants deaths in the course of a year. Deceased infant is a child that after having been born live and before aged one year, shows permanently stopped vital signs.

### Livebirths, per 1 000 population

Livebirths rate is the ratio of the number of live births and the population size in the respective year. The number of live births is divided by the population size and then multiplied by 1000.

### Deaths, per 1 000 population

General mortality rate represents the ratio between the number of deaths and the population size in the respective year. The number of deaths is divided by population size and then multiplied by 1000.

### Natural increase, per 1 000 population

Natural population increase rate is the difference between the number of live births and the number of deaths, in relation to the population size in the respective year.

Natural population increase rate = (number of live births - number of deaths) / population size \* 1000

### Infants deaths, per 1 000 livebirths

Infant mortality rate is the ratio of deceased children under 1 year of age and live births in the respective year. The mortality rate is expressed per 1000 live births.

Infant mortality rate = (number of deceased children under 1 year of age / number of live births) \* 1000

## Additional info:



Download all database data in Excel format:

[Data](#)



DevInfo profiles:

[devinfo.stat.gov.rs/SerbiaProfileLauncher/?lang=en](http://devinfo.stat.gov.rs/SerbiaProfileLauncher/?lang=en)



DevInfo online database:

[devinfo.stat.gov.rs/vitalna](http://devinfo.stat.gov.rs/vitalna)



For additional information or questions please contact:

[devinfo@stat.gov.rs](mailto:devinfo@stat.gov.rs)